

# ART GOES WILD

NEW ENGLAND  
WILD  
FLOWER  
SOCIETY



**NOW THROUGH  
OCTOBER 31, 2007**

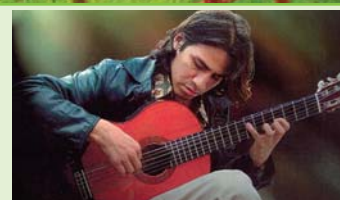
Celebrate the 75th Anniversary of Garden in the Woods  
with ART GOES WILD SPECIAL EVENTS



## ART GOES WILD PERFORMANCES

Cosponsored with Club Passim

For advance tickets, contact the Registrar (508-877-7630, ext. 3303)  
or Club Passim (online at [clubpassim.org](http://clubpassim.org)).



### FAMILY PERFORMING ARTS SERIES

Tickets: \$9 Adults/\$5 Youths (ages 3–18), includes Garden admission. \$1 discount for members. “Wildelicious” snacks for everyone.

**Sunday, June 17 1–2 p.m.**

- *The Singing, Ringing Tree*—audience participation, startling masks, and the genius of Sarah Salerno-Thomas

**Sunday, July 29, 1–2 p.m.**

- *Les Julian and “Color Outside the Lines”*—family musical adventure celebrating the diversity of the world.

### TWILIGHT PERFORMANCE & PICNIC SERIES

Tickets: \$14, includes Garden admission. \$2 discount for members. Gourmet picnics to purchase (or bring your own).

**Saturday, July 14, 5:30–8:30 p.m.**

- *Patiño Vazquez and Los Sugar Kings*—Dynamic rhythms and sweet sounds with global influences.

**Saturday, August 11, 5:30–8:30 p.m.**

- *D’Rafael with Gitano*—Dance and romance to the sounds of award-winning guitarist D’Rafael and the Latin, classical, and jazz music of Gitano.



### 75th ANNIVERSARY TALKS & DEMOS

- *75 Great Native Plants for Your Garden*—Sundays, May 20, 27, June 3, July 1, 15, at 1 pm
- *Container Gardening with Native Plants*—Saturdays, May 26, June 2, 16, 30, at 11 am
- *From a Plant’s Point of View* (video presentation in the Education Center)—Saturdays, May 26, June 2, 16, 30 at 1 pm; Sunday, August 12, at 12:30 and 1 pm; and Saturday, September 15, at 12:30, 1:30, and 2:30 pm
- *Native Plant Art Station*—Saturdays, June 2, 16, 30, and July 14, at 1 pm
- *Gardening Tips for Meadow Wildflowers*—Saturdays, July 14, 28, August 11, at 11 am, and Sunday, August 26, at 1 pm
- *Best Native Plants for Fall Color*—Saturdays, July 28, August 11, 25, at 1 pm, and September 15, at 12 noon
- *Plant Trees and Shrubs Like a Pro*—Saturdays, September 1, 22, at 11 am, and September 15, at 10 am

### MEADOW MADNESS Sunday, August 26, 12–4 p.m.

- Celebrate bugs, blooms, and environmental art
- Enjoy a butterfly walk
- Gardening tips for meadow wildflowers

### GARDENERS DAY Saturday, September 15, 10 a.m.–3 p.m.

Demos, Lectures, Plants for Sale & Refreshments

- *Organic Lawn Care with Paul Tukey*—11 am
- *Native Bulbs with Laura Eisener*—1 pm

See Anniversary Talks & Demonstrations above for more Gardeners Day events.

### FALL FAMILY FESTIVAL Sunday, October 14, 12–4 p.m.

- Special family programs, plus animal shows
- Scavenger hunt
- Get Creative!—design your own mini-garden

NEW ENGLAND WILD FLOWER SOCIETY AT GARDEN IN THE WOODS 180 Hemenway Road • Framingham, Massachusetts 01701  
508.877.7630 • [newenglandWILD.org](http://newenglandWILD.org)